

GREYSTONE

*Exclusive Brokers
for Suburban Station*

Suburban Station

Prime Retail Opportunity



PROPERTY DETAILS

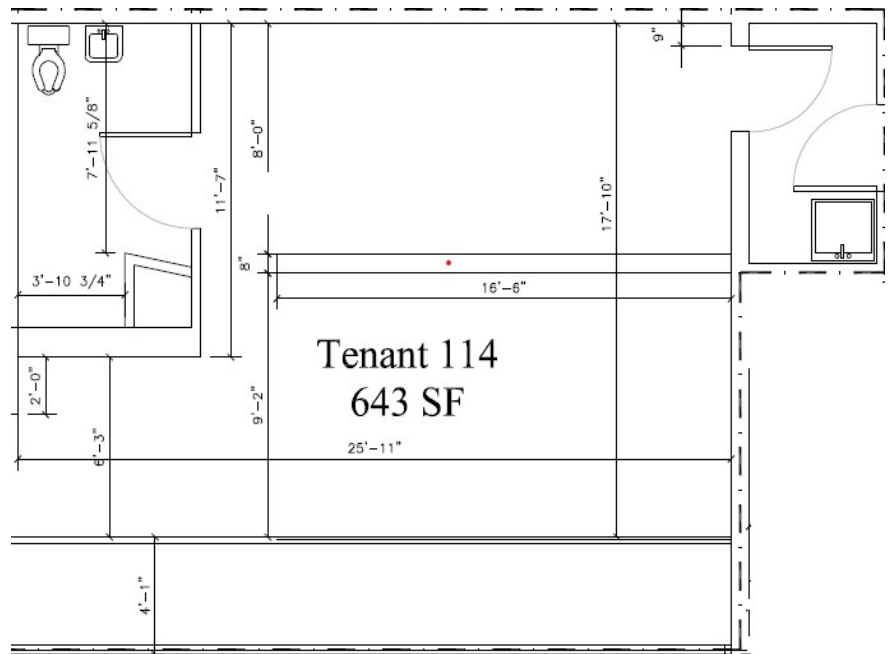
This versatile commercial space is located adjacent to the 15th Street Courtyard and below Market Street on the concourse level of Suburban Station. The turn-key premises includes an estimated area of 643 SF. The space is equipped with a private restroom, fully installed HVAC System, two pastry case units, and dedicated food preparation area with a 3-phase sink.

We welcome creative uses for this space including food service, and coffee/beverage.

SEPTA's Suburban Station is centrally located in Center City Philadelphia and serves as a vital link between various transit modes including regional rail, subway, and bus services. The station's centrality captures both commuter and office worker traffic.

Size: 643 SF

Daily Ridership: ±13,000



For more information please contact:

Charles Di Maggio and Dennis Wood
(215) 918-8892 | SEPTALeasing@greyco.com

Greystone Brokerage Services LLC

AVAILABLE FOR LEASE

± 643 SF | RETAIL SPACE

UNIT #31N

